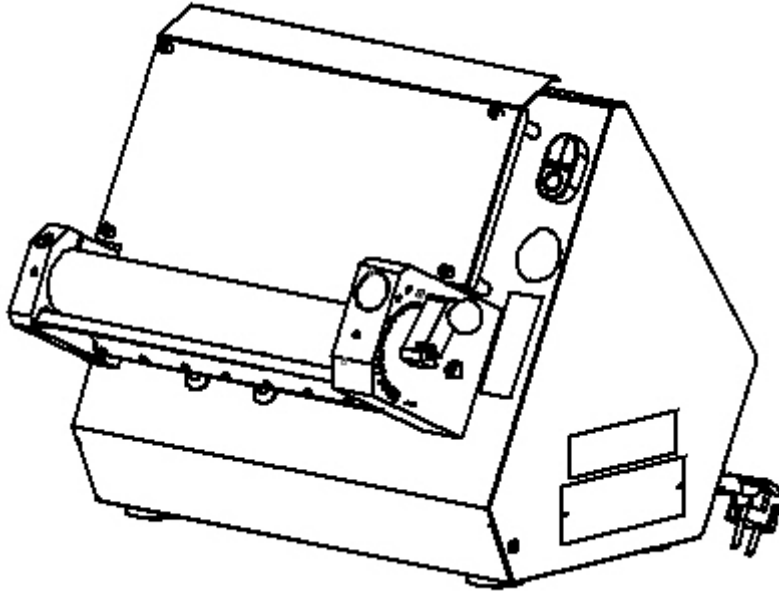




MODEL
TTA-S-30 / TTA-S-40
DOUGH ROLLING MACHINE (SINGLE ROLLER)



USER & MAINTENANCE MANUAL

GMG ENDÜSTRİYEL MUTFAK EKİPMANLARI SAN. TİC. LTD. ŞTİ.

WARRANTY CERTIFICATE



SERIAL NUMBER:

SALE DATE:

Sold at the above date **TTA-S-..... MODEL DOUGHS ROLL OUT MACHINE** is guaranteed against production failures for **1 Year** by **GMG ENDÜSTRİYEL MUTFAK EKİPMANLARI SAN. TİC. LTD. ŞTİ.**

Warranty Terms;

- Warranty terms start after the product delivery for 1 year.
- Recommended daily working time is 10 hours. The scope of warranty is assessed by year or by working hours.
- The product is under warranty except plastic rollers (included plastic rollers if it is a manufacturing defect).
- Documents are invalid, if haven't sale date and confirm signature of company. You have to show the warranty certificate to benefit from the warranty.
- Device is guaranteed against defects if mount and use as described in the use and maintenance manual.
- Detection the location of defects, and elimination of the problems are responsibilities of the **GMG ENDÜSTRİYEL MUTFAK EKİPMANLARI SAN. TİC. LTD. ŞTİ.**
- Warranty terms include only one device. You can't claim any rights or compensation for another device.
- If Changes are made at the type, model and serial numbers, the warranty eliminates.
- If material, worker or assembly defects appear, repaired free by **GMG ENDÜSTRİYEL MUTFAK EKİPMANLARI SAN. TİC. LTD. ŞTİ.** at the product warranty period (Transportation cost is not included).
- Failures are only repaired by **GMG ENDÜSTRİYEL MUTFAK EKİPMANLARI SAN. TİC. LTD. ŞTİ.** personal. The intervention of unauthorized person, cancel the appliance of warranty.
- Installation have to be done by **GMG ENDÜSTRİYEL MUTFAK EKİPMANLARI SAN. TİC. LTD. ŞTİ.** personal. If usage place changes, customer must give information to **GMG ENDÜSTRİYEL MUTFAK EKİPMANLARI SAN. TİC. LTD. ŞTİ.**
- In the event of failure service must be informed.
- The failures and damages given by external factors are out of the warranty terms.
- Any failure of the product warranty period is added to the product warranty time. The repair time is until 20 working days.

AUTHORIZED PERSON

STAMP –SIGNATURE

PRESENTATION

- Please read the manual carefully before installing the machine.
- The machine will be out of warranty when your operate the machine with at read.
- Please read carefully the manual that gives you information on the installation is prepared in accordance with the legal regulations before arriving at the machine installation.
- For information you cannot understand, ask your nearest authorized service.
- Please note that if the technical service personnel is kept waiting you will be billed for each hour.

CONTENTS

WARRANTY CERTIFICATE

PRESANTATION

SECTION 1: INTRODUCTION

1.1 General Introduction of Dough Rolling Machine Model: TTA-S-30 / TTA-S-40

1.2 Technical Specifications Table

1.3 Safety Warnings Labels

SECTION 2: INTRODUCTION OF MACHINE BODY COMPONENTS

2.1 Sheet Assembly

2.2 Body Components

SECTION 3: INSTRUCTIONS FOR USE

3.1 Usage Recommendations

3.2 Safety Warnings

3.3 Operating and Starting Instructions

SECTION 4: MAINTENANCE

4.1 Exterior Body Maintenance

4.2 Scraping Knife Maintenance

SECTION 5: SPARE PARTS MANUAL

SECTION 6: ELECTRICAL DIAGRAM

SECTION 1: INTRODUCTION

1.1 General Introduction of Dough Rolling Machine Model:TTA-S-30 / TTA-S-40

Uses at lahmacun, pizza and other dough rolling processes. Dough thickness and diameter get easy with roller gap adjustment system. Dough rolling process perform in min. 3, max. 5 seconds with fast and easy using feature.

1.2 Technical Specifications Table:

Technical Specifications Table	TTA-S-30	TTA-S-40
Length (cm)	41	52
Width (cm)	39	39
Height (cm)	37	37
Engine Power (kW)	0.22	0.22
Electrical Specifications (V-HZ)	230V 1N 50/60HZ	230V 1N 50/60HZ
Machine Weight (Kg)	22,2	22,6
Dough Weight (gr)	80-210	80-500
Dough Diameter (cm)	19-29	26-40
Roller Range (mm)	0-4,1	0-4,1
Hourly Production Quantity	720-1200	720-1200

1.3 Safety Warnings Labels:

LABELS



CAUTION !
CLEANING INSTRUCTIONS

- Do not put foreign materials between working machine rollers.
- Do not wash the machine with wet cloth and clean water, when electrical line is connected.
- Do not clean the machine, when it is working.
- Always check the cooling fan is running on the machine.
- Two monthly, open the back cover of the machine after removing the plug and clean inside of the machine by a pain brush or vacuum cleaner.
- At the end of business, remove the roller scraper blades and clean by wet cloth or sponge. Do not hit hard objects and protect against bending.

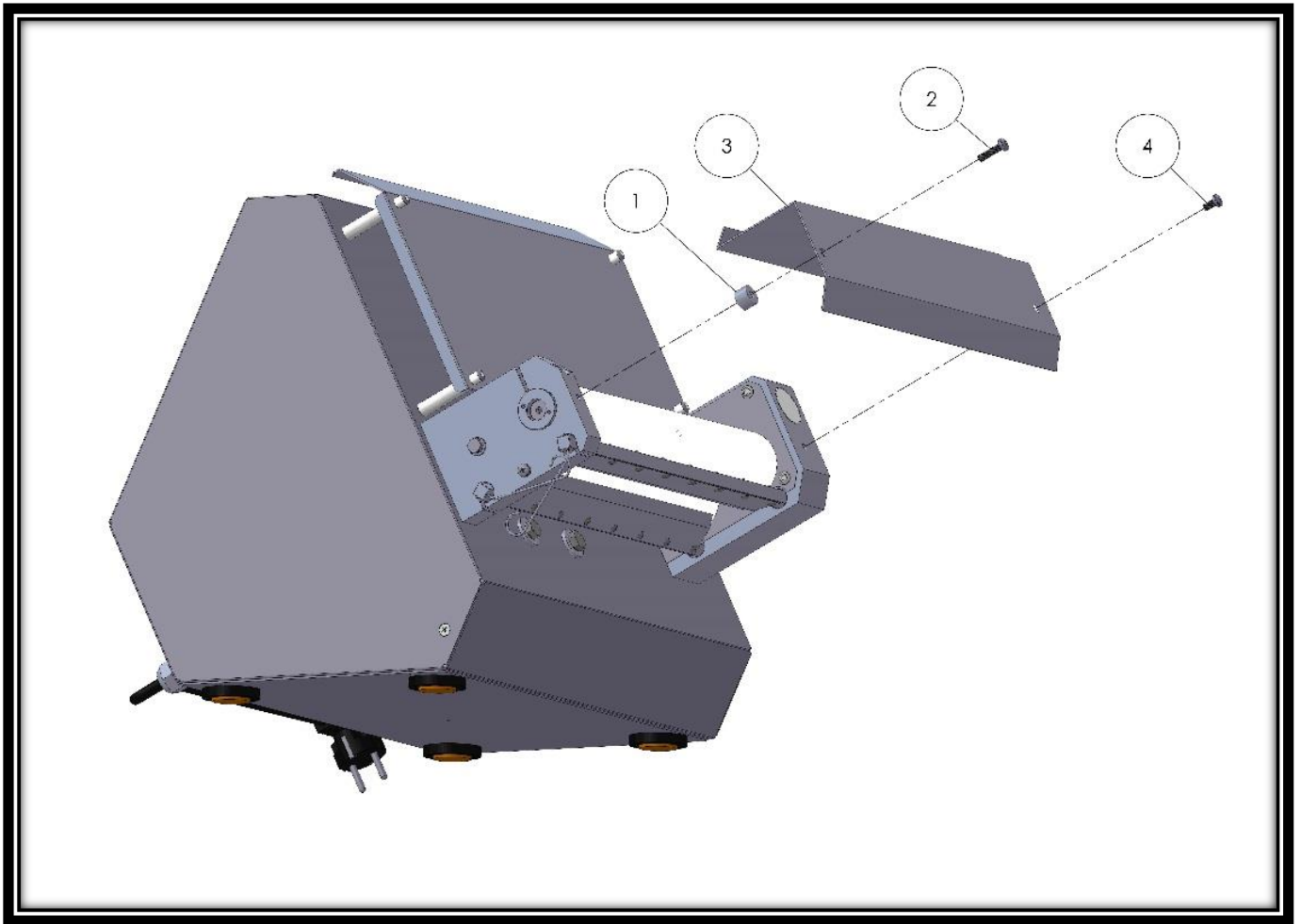


ATTENTION!

- CUT ELECTRIC CURRENT BEFORE OPENING PROTECTION SYSTEM
- DO NOT CLEAR WHEN MACHINE IS WORKING

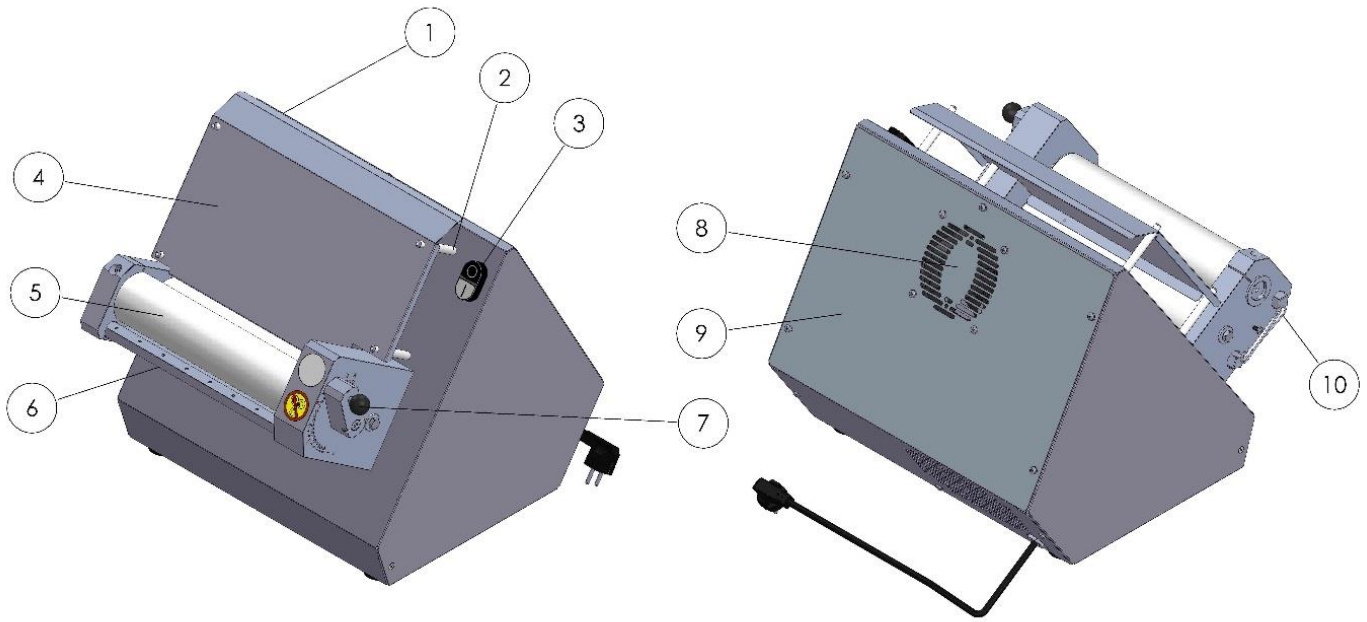
SECTION 2: INTRODUCTION OF MACHINE BODY COMPONENTS

2.1 Sheet Assembly:



	PART DESCRIPTION
1	THIMBLE
2	BOLT
3	GUARD SHEET
4	BOLT

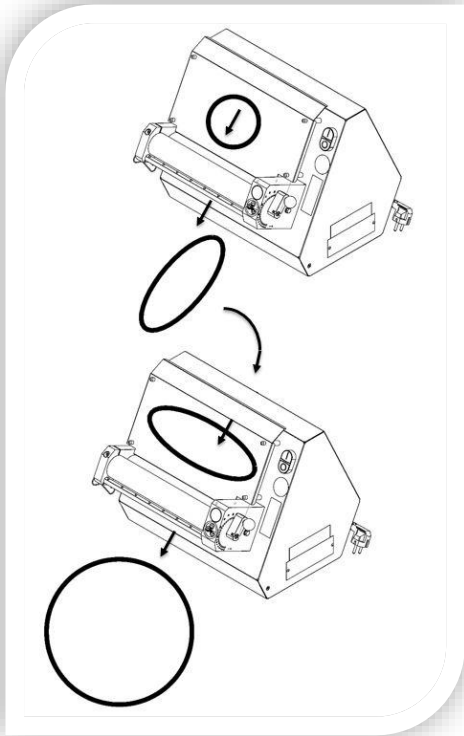
2.2 Body Components:



PART DESCRIPTION			
FRONT VIEW		BACK VIEW	
1	BODY	6	ROLLER SCRAPER
2	SHEET HOLDER PIN	7	ADJUST HANDLE
3	START/STOP SWITCH	8	FAN
4	CENTRAL SHEET	9	BACK COVER
5	ROLLER GROUP	10	SCRAPERS WIRE

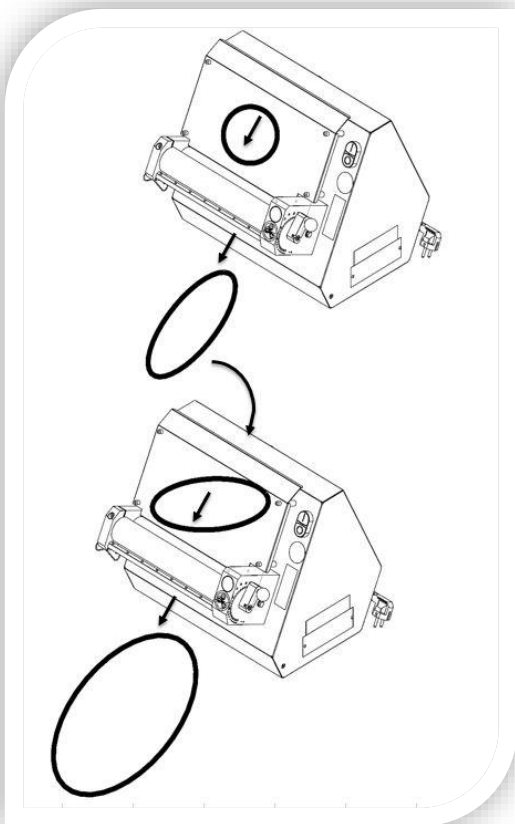
SECTION 3: INSTRUCTIONS FOR USE

3.1 Usage Recommendations:



For Rolling Circular Dough (Lahmacun Dough Etc.);

- Compress the dough and make it circular.
- Pass through the dough to the upper roller gap.
- Rotate the dough (shown in figure) then pass through the dough in parallel to the bottom roller gap.



For Rolling Ellipse Dough (Pide Dough);

- Compress the dough and make it circular.
- Pass through the dough to the upper roller gap.
- Rotate the dough (shown in figure) then pass through the dough in 45° to the bottom roller gap.

3.2 Safety Warnings:

- 1- Secure voltage is between 230 V and 240 V
- 2- Set up on a straight floor.
- 3- Single phase on operating.
- 4- Don't wipe the machine with a wet cloth when connect to plug.
- 5- Cut electric current before opening protection system.
- 6- Check the air intake of the cooling fan daily.

3.3 Operating and Starting Instructions:

- 1- Connect to monophasic electrical supply.
- 2- Push the "I" button.
- 3- Adjust the roller space shown in picture. (This procedure adjusts the dough thickness and diameter)



Adjust the dough thickness from "0" to "20" shown in figure.

- Pull the bakelite knob and rotate the knob to "+" or "-" direction.
- Rotate the knob to "+" direction for enlarge the dough thickness. Rotate the knob to "-" direction for reduce the dough thickness.
- Push the bakelite knob when the intended roller gap adjusted.

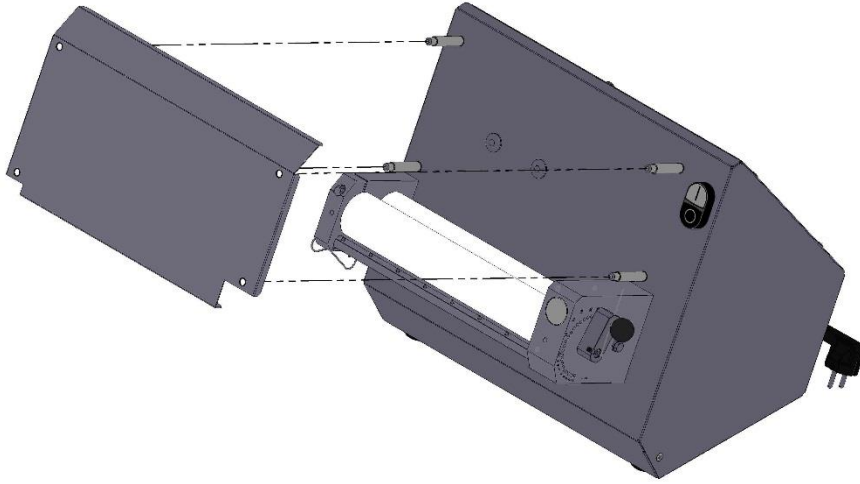
NOTE = Entrance roller gap advice to be bigger than the exit roller gap.

NOTE: Scrapers must be stretched

DESIRED PRODUCT	UPPER	BOTTOM
LAHMACUN		
PIDE		
PIZZA		
TORTILLA BREAD		
BOREK DOUGH		

SECTION 4: MAINTENANCE

4.1 Exterior Body Maintenance:



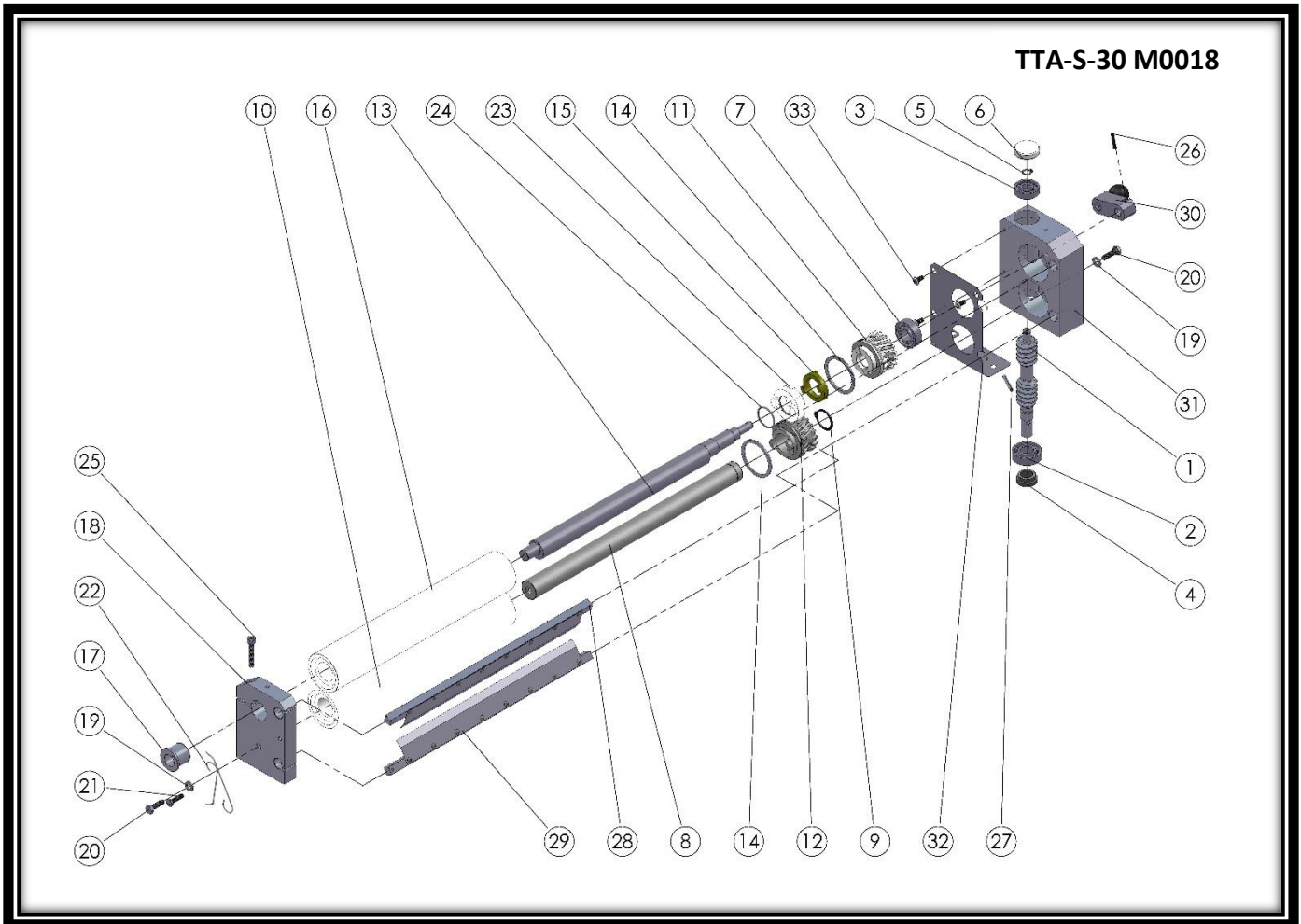
Pull up the central sheet shown in picture then clean the flour and crumbs. Stop the machine and unplug the electrical supply then clean with wet cloth. Don't plug the electrical supply before the machine dry.

4.2 Scrapers Maintenance:



- Push up scrapers wire as shown in the figure
- Remove the scrapers from the hole as shown in the figure and clean the scrapers daily.

SECTION 5: SPARE PARTS MANUAL

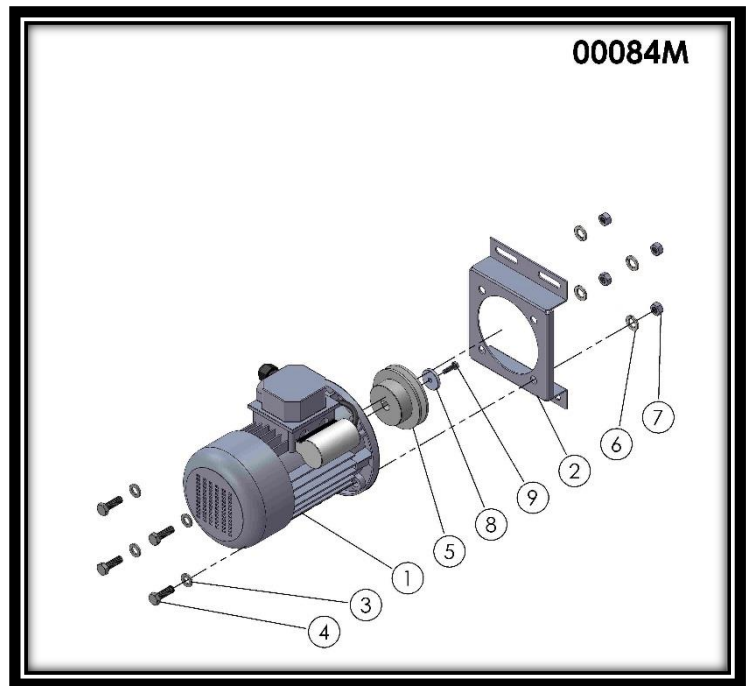


TTA-S-30 M0018 (ROLLER GROUP) SPARE PARTS LIST

ITEM NO.	SPARE PART NUMBER	DESCRIPTION OF THE SPARE PART	UNIT	ITEM NO.	SPARE PART NUMBER	DESCRIPTION OF THE SPARE PART	UNIT
1	00011	WORM	1	18	00001	ROLLER BEARING	1
2	00024	BEARING	1	19	00050	WASHER	2
3	00025	BEARING	1	20	00041	BOLT	2
4	00022	THIMBLE	1	21	00047	BOLT	1
5	00027	RING	1	22	00038	SCRAPERS WIRE	2
6	00013	COVER	1	23	00088	CLUTCH	1
7	00026	BEARING	1	24	00092	O-RING	1
8	00021	SHAFT (BOTTOM)	1	25	00054	BOLT	1
9	00089	RING	1	26	00095	PIM	1
10	00017	ROLLER (BOTTOM)	1	27	00096	PIM	1
11	00007	GEAR (FEMALE)	1	28	00336M	SCRAPERS (TOP)	1
12	00338	GEAR (MALE)	1	29	00337M	SCRAPERS (BOTTOM)	1
13	00020	SHAFT (TOP)	1	30	00335M	ADJUSTING LEVER	1
14	00009	RING	2	31	00372	GEARBOX	1
15	00010	CLUTCH	1	32	00385	ROLLER GUARD SHEET	1
16	00016	ROLLER (TOP)	1	33	00340	BOLT	3
17	00086	THIMBLE	1	34			

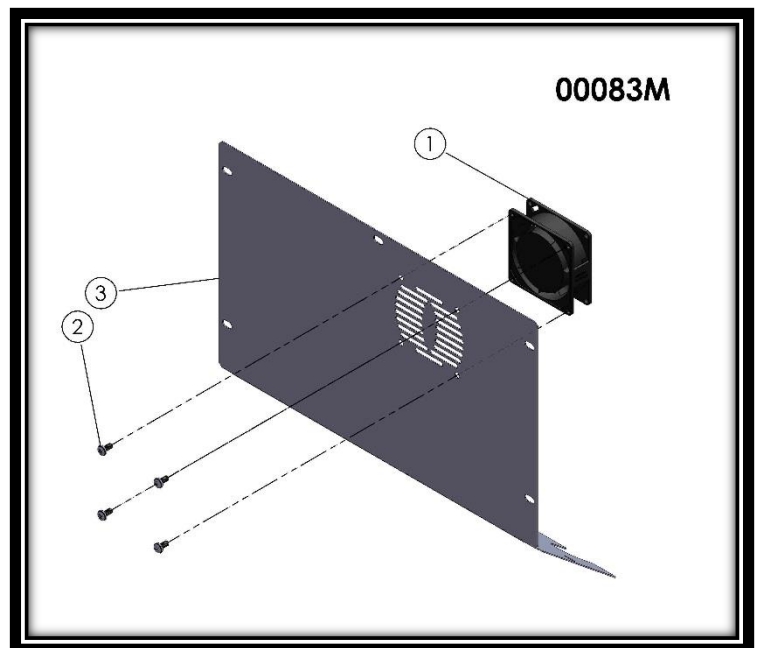
00084M SPARE PART LIST

ITEM	SPARE PART NUMBER	DESCRIPTION OF THE SPARE PART	UNIT
1	00386	ENGINE	1
2	00393	ENGINE SHEET	1
3	01963	WASHER	4
4	04072	BOLT	4
5	00394	PULLEY	1
6	01961	WASHER	4
7	01959	NUT	4
8	00098	WASHER	1
9	00049	BOLT	1

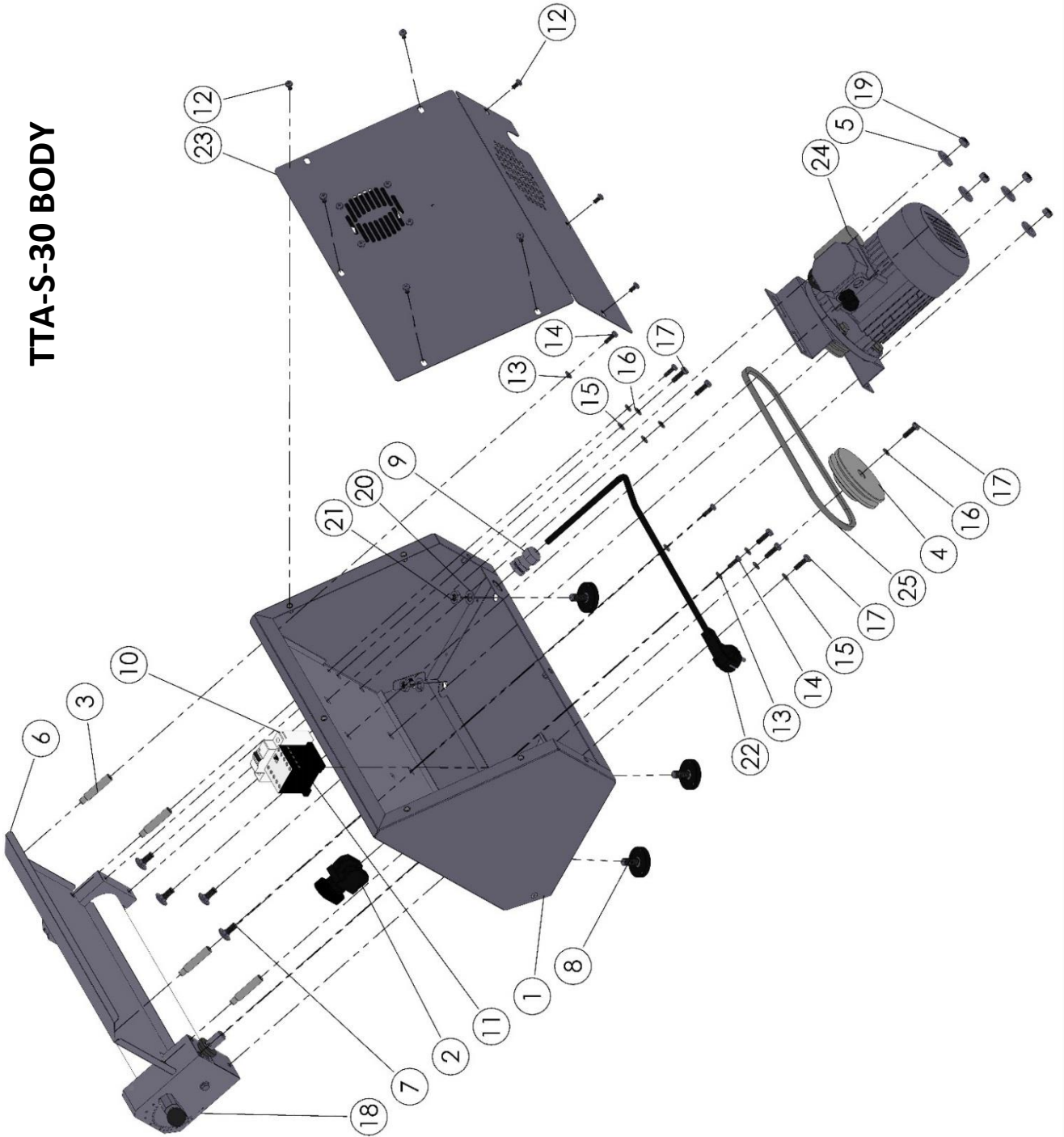


00083M SPARE PART LIST

ITEM	SPARE PART NUMBER	DESCRIPTION OF THE SPARE PART	UNIT
1	00401	FAN	1
2	00046	BOLT	4
3	00016M	BACK COVER	1



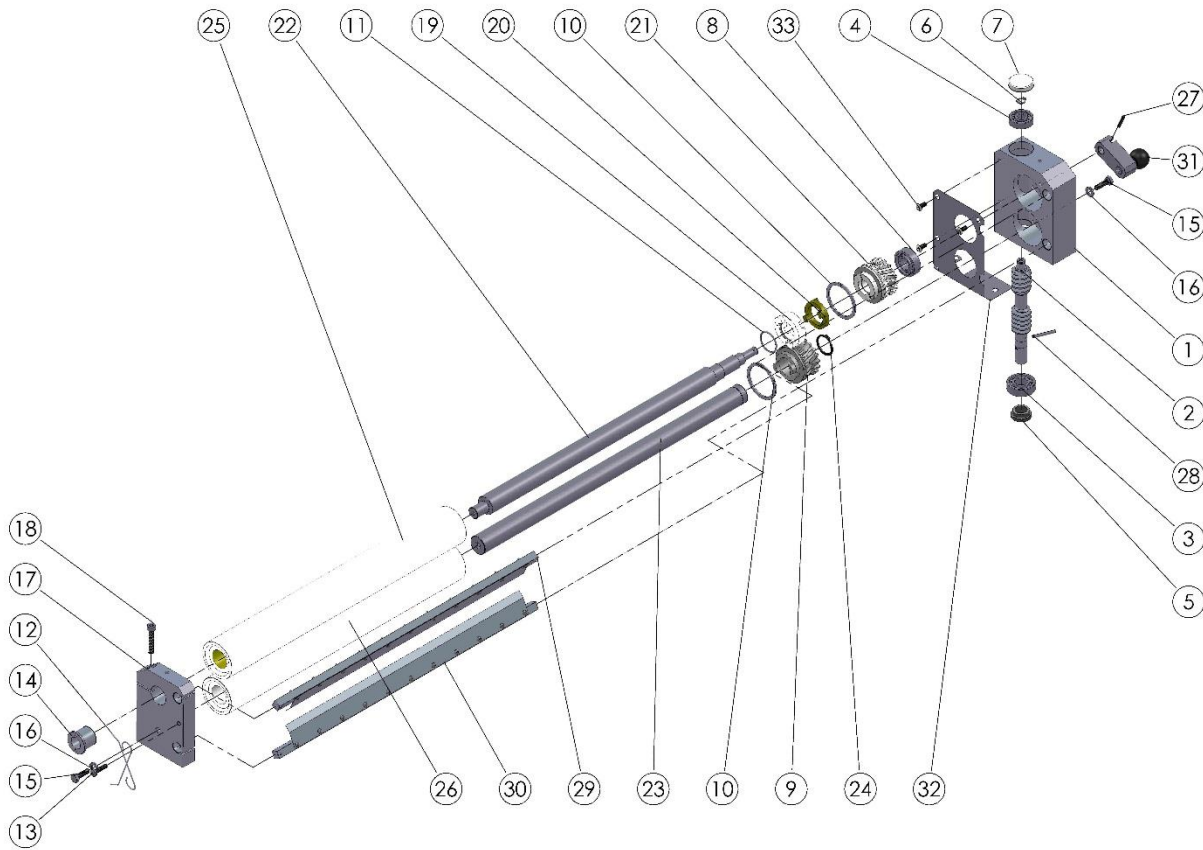
TTA-S-30 BODY



TTA-S-30 BODY SPARE PARTS LIST

ITEM	SPARE PART NUMBER	DESCRIPTION OF THE SPARE PART	UNIT
1	00088M	BODY	1
2	00055	START/STOP SWITCH	1
3	00132	CENTRAL SHEET PIN (LONG)	4
4	00085	PULLEY	1
5	01258	WASHER	4
6	00391	CENTRAL SHEET	1
7	00476	BOLT	4
8	00354	LEG	4
9	00097	RECORD	1
10	00057	FUSE	1
11	00056	CONTACTOR	1
12	00046	BOLT	8
13	00051	WASHER	4
14	00049	BOLT	4
15	00050	WASHER	5
16	00042	WASHER	3
17	00041	BOLT	6
18	TTA-S-30 M0018	BOTTOM ROLLER GROUP	1
19	01959	NUT	8
20	01960	WASHER	4
21	00298	NUT	4
22	00355	POWER CABLE	1
23	00083M	BACK COVER	1
24	00084M	ENGINE	1
25	00029	V BELT	1

TTA-S-40 M0012

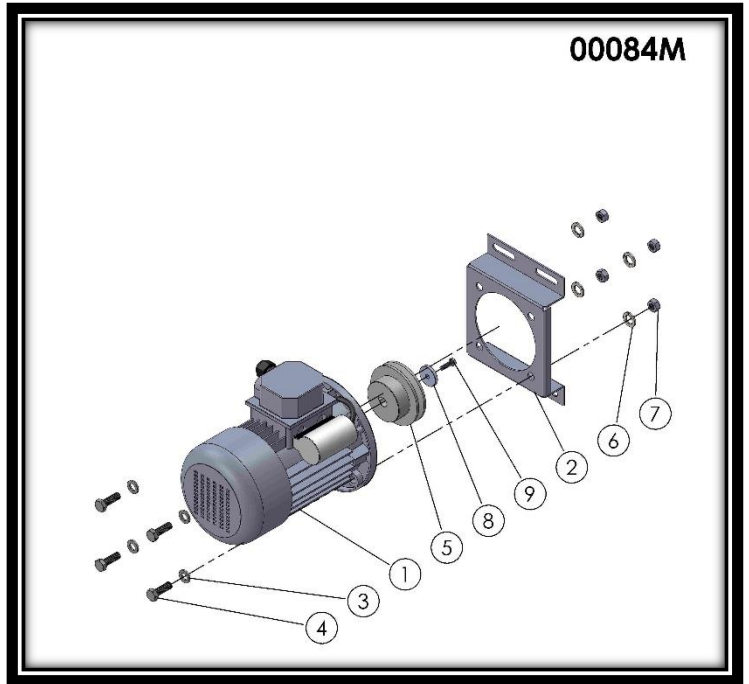


TTA-S-40 M0012 SPARE PARTS LIST

ITEM	SPARE PART NUMBER	DESCRIPTION OF THE SPARE PART	UNIT	ITEM	SPARE PART NUMBER	DESCRIPTION OF THE SPARE PART	UNIT
1	00372	GEAR BOX	1	18	00054	BOLT	1
2	00011	WORM	1	19	00088	CLUTCH	1
3	00024	BEARING	1	20	00010	CLUTCH	1
4	00025	BEARING	1	21	00007	GEAR (FEMALE)	1
5	00022	THIMBLE	1	22	00102	ROLLER SHAFT (TOP)	1
6	00027	RING	1	23	00104	ROLLER SHAFT (BOTTOM)	1
7	00013	COVER	1	24	00089	RING	1
8	00026	ROLLER	1	25	00136	ROLLER	1
9	00338	GEAR (MALE)	1	26	00137	ROLLER	1
10	00009	RING	2	27	00095	PIN	1
11	00092	O-RING	1	28	00096	PIN	1
12	00038	SCRAPERS WIRE	2	29	00341M	SCRAPER (TOP)	1
13	00047	BOLT	1	30	00342M	SCRAPER (BOTTOM)	1
14	00086	THIMBLE	1	31	00335M	ADJUSTING LEVER	1
15	00041	BOLT	2	32	00385	ROLLER GUARD SHEET	1
16	00050	WASHER	2	33	00340	BOLT	3
17	00001	ROLLER BEARING	1	34			

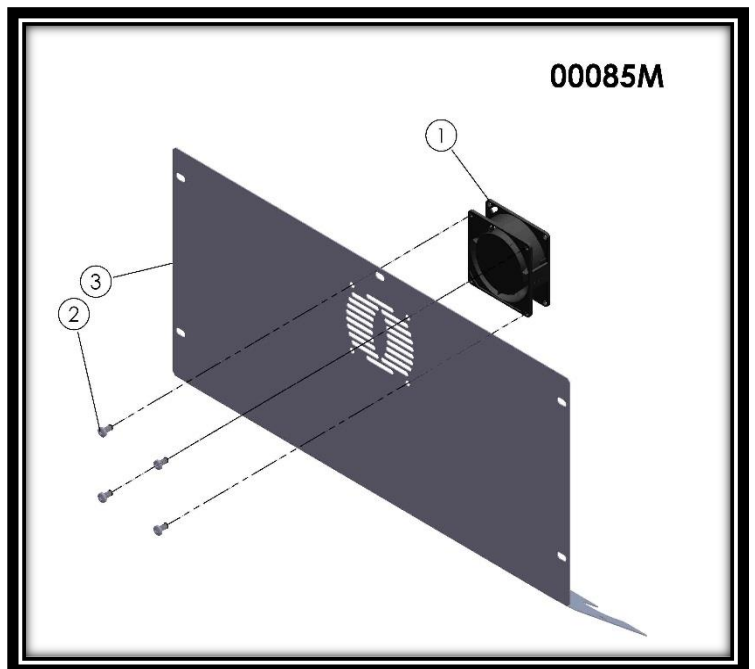
00084M SPARE PARTS LIST

ITEM	SPARE PART NUMBER	DESCRIPTION OF THE SPARE PART	UNIT
1	00386	ENGINE	1
2	00393	ENGINE SHEET	1
3	01963	WASHER	4
4	04072	BOLT	4
5	00394	PULLEY	1
6	01961	WASHER	4
7	01959	NUT	4
8	00098	WASHER	1
9	00049	BOLT	1

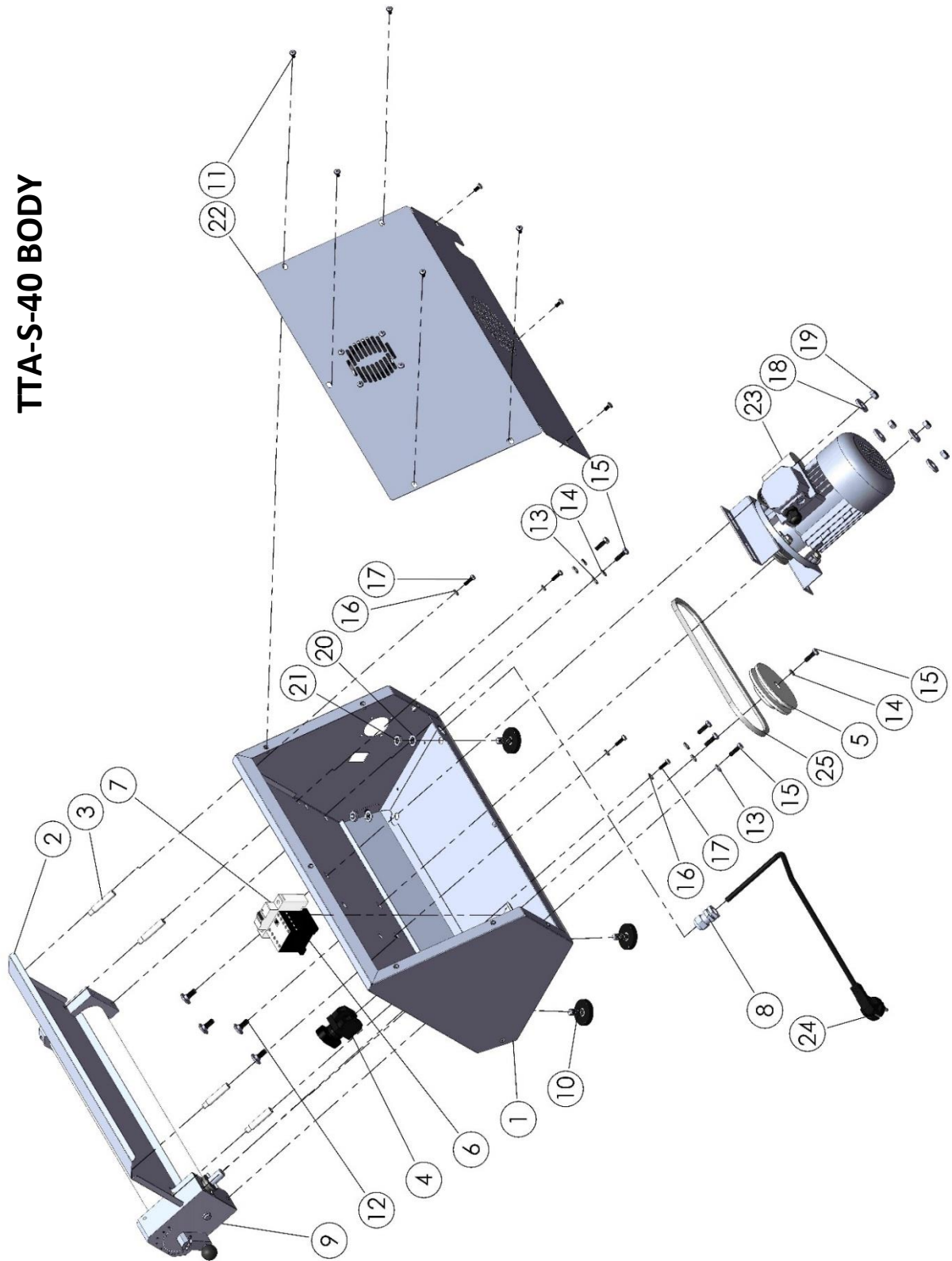


00085M SPARE PARTS LIST

ITEM	SPARE PART NUMBER	DESCRIPTION OF THE SPARE PART	UNIT
1	00401	FAN	1
2	00046	BOLT	4
3	00017M	BACK COVER	1



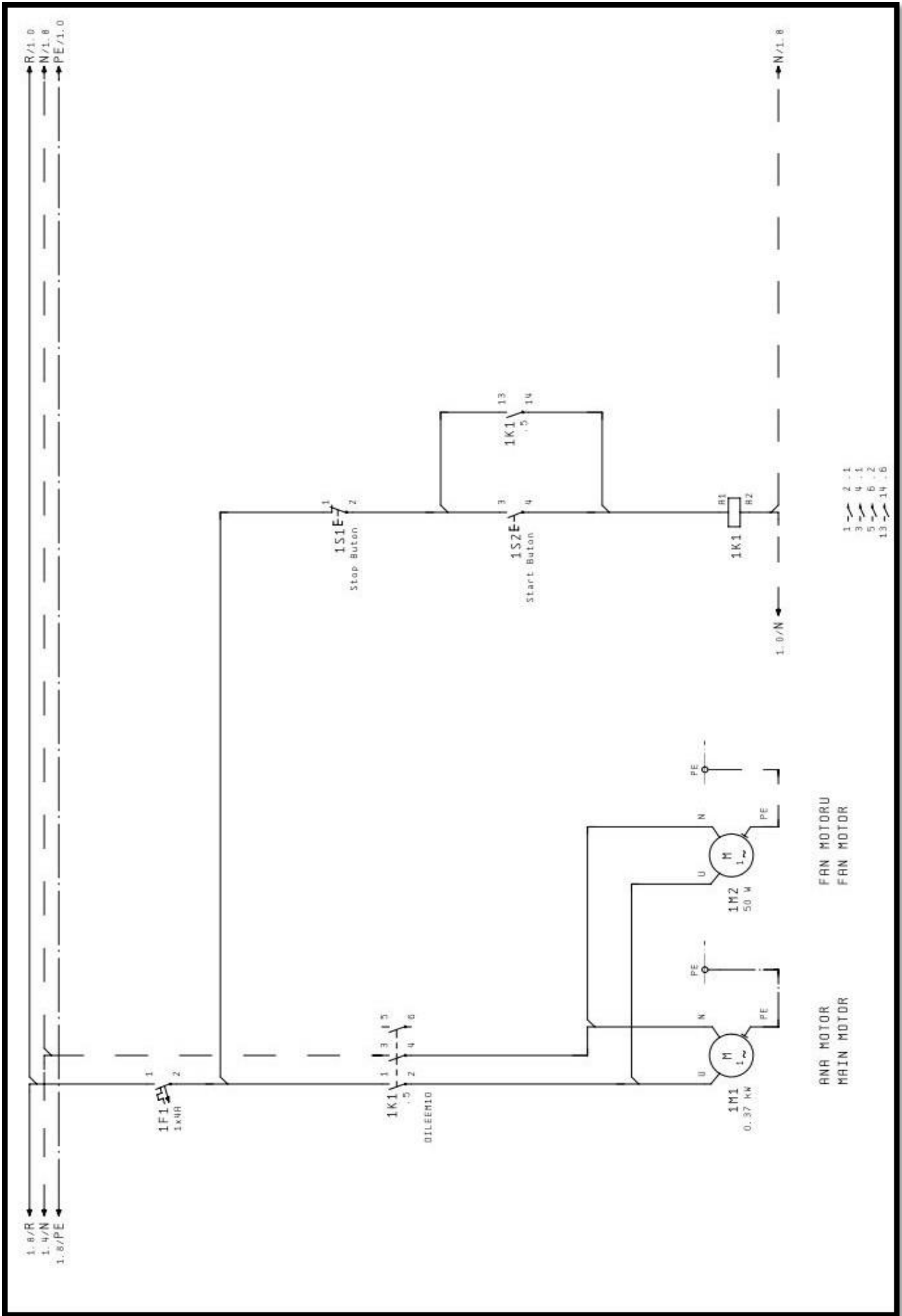
TTA-S-40 BODY



TTA-S-40 BODY SPARE PARTS LIST

ITEM	SPARE PART NUMBER	DESCRIPTION OF THE SPARE PART	UNIT
1	00092M	SM-40 SINGLE BODY	1
2	00397	CENTRAL SHEET	1
3	00132	CENTRAL SHEET PIN (LONG)	4
4	00055	BUTTON	1
5	00085	PULLEY	1
6	00056	CONTACTOR	1
7	00057	FUSE	1
8	00097	RECORD	1
9	TTA-S-40 M0012	BOTTOM ROLLER GROUP	1
10	00354	LEG	4
11	00046	BOLT	8
12	00476	BOLT	4
13	00050	WASHER	5
14	00042	WASHER	3
15	00041	BOLT	6
16	00051	WASHER	4
17	00049	BOLT	4
18	01258	WASHER	4
19	01959	NUT	4
20	01960	WASHER	4
21	00298	NUT	4
22	00085M	BACK COVER	1
23	00084M	ENGINE	1
24	00403	POWER CABLE	1
25	00029	V BELT	1

SECTION 6: ELECTRICAL DIAGRAM





GMG ENDÜSTRİYEL MUTFAK EKİPMANLARI SAN. TİC. LTD. ŞTİ.
YAZIBAŞI NEIGHBORHOOD İZMİR-AYDIN STREET NO:45 TORBALI/İZMİR/TÜRKİYE
TEL:+90 232 257 73 08/09 FAX:+90 232 257 73 10

www.gmgoven.com info@gmgoven.com